

APPROACH FOR DEVELOPING THE ERP SYSTEMS IN HIGHER EDUCATION INSTITUTIONS

*Adela BÂRA, Floarea NĂSTASE¹,
Iuliana SCORȚA and Vlad DIACONIȚĂ*
The Bucharest Academy of Economic Studies, Romania

ABSTRACT

In response to newly emerged technologies and to the changes in the competitive climate of Higher Education Institutions (HEIs) sector, the Romanian universities need to improve operational efficiency by implementing advanced information systems. These systems were seen as the solution to address the growing governmental information requirements and improve competitiveness. Also, in order to support a high level management the HEIs need to implement a Decision Support System in order to fundament the decisions. The purpose of this paper is to provide a solution for an information system that could integrate all of a Romanian HEI's department functionalities and presents a possible architectural solution for developing a decision support system that can extract and report the information from the ERP system.

✦ *Higher Education Institutions (HEIs), Enterprise Resource Planning (ERP) systems, Decision Support Systems (DSS)*

INTRODUCTION

The higher education system (educational organizations) are different in essence from business or commercial organizations. The managerial parameters are different, the organization functions differ and the organizational values and methods by which it is judged for its activities are often different in substance.

¹ *Correspondence address:* Floarea Năstase, Bucharest Academy of Economic Studies, Piața Romană nr. 6, Bucharest, Romania, Tel. +40 21.319.19.00, e-mail address: nastasef@ase.ro

An educational organization fits the definition of a „loosely-coupled” organization. The term „loosely-coupled” is used to describe a situation in which two phenomena share several common variables. In a loosely-coupled system, the subsystems are partially connected to each other, as are their operations while each subsystem maintains its own identity and autonomy. There are only limited relationships of dependence and supervision between the various parts of the system. Loose coupling in an organization is primarily expressed by the limited guidelines provided to direct the activity of any particular unit, yet all of the various units are included in a single, more comprehensive organization, whose instructions do obligate people working in those units yet the degree of connection between the two systems depends on the activity of the common components (Shoham & Perry, 2009: 232).

Researchers have also defined universities as „organized anarchy”. Since a university does not have unequivocal goals but rather goals that are unclear or even contradictory, standard theories of management, decision-making and control are inapplicable. The researchers noted that policies of higher education systems are characterized by a lack of consistency that, combined with the inability to reach agreement in those cases where operating goals have been defined, makes universities difficult to manage. The changes that are occurring around the world influence not only organizations and government agencies but also universities (Shoham & Perry, 2009: 232). The forces of change acting on higher education are varied (Scott, 2003: 64; Shoham & Perry, 2009: 232):

- Increased competition - competition with other domestic universities as well as with foreign universities and private institutions.
- Significant decrease in government funding and public scrutiny - this change is primarily a result of a changed perspective, one that sees public education not as a service but rather a valuable product. Education is not an investment but rather an expense that requires strict scrutiny of government spending on it.
- Mounting trend towards consumer rights - the high cost of education leads students to insist on receiving a quality product and good service from the university. Students are even willing to initiate legal action.
- Increased distribution of communications and information technology in all areas of life - in the past, colleges and universities had a monopoly on up-to-date, quality information. Today, this information is available on the Internet and in many other formats, some of which do require payment (Kaiser F. *et al.*, 2003). The higher education system has been transformed into a complex system that is open to external influences, from domestic and international forces. The system has become dynamic and therefore control, current data and information are needed.

In Romania, as in many other countries (Allen *et al.*, 2002), higher education has moved from an elite system to one of mass education. Also, the student population

profile has diversified. Government funding has been continuously reduced over the past years but the demand for education is considerably higher. In these conditions it emerges the need for solutions to provide a better management for these public institutions. As a response to these issues HEIs have considered the adoption of state-of-the-art technology to improve organizational efficiency and effectiveness. Researchers have conducted studies to evaluate if a Romanian HEI is capable of sustaining such a project and which are the critical success factors that might affect the implementation of an information system (Scorța, 2006; Fotache & Hurbean, 2004; Rusu *et al.*, 2005; Fui-Hoon & Lee-Shang Lau, 2001) in a Romanian HEI (Bologa *et al.*, 2009). Most researchers stated that although there are many differences between the „West European way” and the „East European way” of conducting HEI management (due to significant differences in organizational, epistemic culture (Wagner E. *et al.*, 2004) the main reason for which HEIs do not undertake such projects is the lack of funds. As a result, in Romanian HEIs we will find that almost every faculty or department has its own software applications, developed in-house, applications that use various operation systems, tools, databases and protocols (Bologa *et al.*, 2009). In this paper we will try to address this problem by proposing a solution for an information system adapted to the Romanian HEI necessities.

The first section has introduced the study and shown its relevance. The remainder of the paper is organized as follows: the next section frames our research by introducing the background of the study. Having presented the landscape inspiring the study’s research questions, Section 2 presents the solution that will be developed like framework in the future. Section 3 details the decision support system components that will be included in the framework. The paper is finalized with conclusions and suggestions for future research.

1. BACKGROUND

ERP systems, are configurable information systems packages that integrate information and information-based processes within and across functional areas in an organization. Spanning the enterprise they automate and structure an organization’s business processes by providing reference models and process templates. ERP systems come as standardized software packages from firms like SAP, Oracle, allowing customers to buy them off the-shelf and adapt them to their requirements, rather than having to develop complex software solutions. In fact, they have become a preferred method for replacing previously developed proprietary systems that now define in-house legacy systems. The power of the standard ERP solution lies in its automation of core business activities. More recently in light of e-business developments, ERP systems have been extended to include inter-organizational processes that complement today’s supply chain management requirements (Allen *et al.*, 2002: 228).

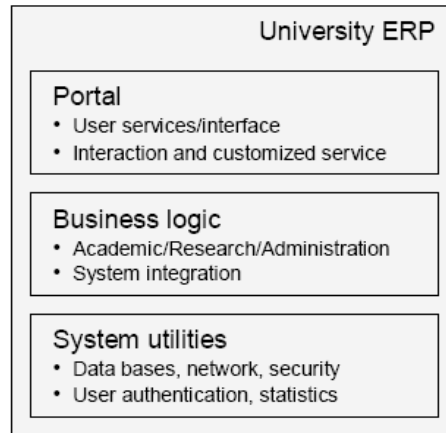
The trend toward ERP „business solutions” reflects the „marketization” of universities where institutional governances is now the domain of professional managers who aim to mitigate risks while remaining competitive in an increasingly complex global higher education marketplace. Given this increasingly complex context, the university sector represents an industry in which enterprise systems are increasingly being implemented in order to modernize back-office, administrative functions via an integrated technology platform. However, the current generation of ERP systems have evolved from technology designed for the manufacturing industry and still embed „reference models that espouse industry best practices at too high a level for an effective assessment of how the ERP system would actually affect the organizational processes” (Wagner & Newell, 2004: 307).

Moreover, the integrated, „whole-house” view underpinning ERP technology tries to force all departments into using a standardized template, no matter how decentralized and autonomous are the departments involved. Given this technology design, some authors have pointed to a dichotomy between implementing integrated, standardized ERP technology and the traditional, fiefdom-like structure of universities where information systems develop organically to support the values of academic freedom and „scientific separateness”. This suggests a tension between the basic assumptions underpinning the design of ERP products and the operation of a university (Wagner & Newell, 2004: 308).

University information system is an integrated business system for comprehensive management of critical function of university. It supports business processes of administration, education, and research management (Kwon, 2008: 502).

University information system is a typical corporate information system which supports several hundred functions to more than several thousands students, professors, and staffs in university. It could be realized in specially designed system integration type or in software package based ERP type. Particularly, university ERP as a software package based university information system provides the required functions through the only one integrated software package instead of several independent application systems in the past. Since it doesn't need any interfaces between different application packages, university ERP is strongly advantageous in process standardization and maintenance convenience. Also, all of the information within the system is stored in a single unified database that provides a benefit of enhanced report writing capabilities (Kwon, 2008: 502). A typical internal hierarchy of an university ERP is showed in Figure 1. The internal hierarchy of university ERP consists of: portal (user services, interface, interaction and customized service), business logic (academic, research, administration) and system utilities (databases, network, security, user authentication, and statistics).

Figure 1. Components of university ERP system



(Source: Kwon, 2008: 502)

In the academic literature we found several studies focused on the implementation of ERP system (Chang, 2004; Parr & Shanks, 2000).

Shanks and Parr defined ERP implementation as the process of developing the initial business case and planning the project, configuring and implementing the packaged software, and subsequent improvements to business processes (Parr *et al.*, 2000: 1), ERP implementation should therefore be considered a „business project rather than a technological initiative” (Markus & Tanis, 2000). ERP implementation is considerably different from any traditional information system implementation for many reasons (Rasmy *et al.*, 2001: 2):

- The integrated nature of ERP applications causes dramatic changes on work flow, organizational structure and on the way people do their jobs;
- ERP systems are not built but adopted, this involves a mix of business process reengineering and package customization;
- ERP implementation is not just a technical exercise but it is a socio-technical challenge as it poses new set of management procedures.

In that sense, it has become clear that ERP implementation differs from traditional systems development where the key focus has shifted from a heavy emphasis on technical analysis and programming towards business process design and human elements (Gibson *et al.*, 1999).

Some researchers were concerned about the existence of a large gulf between standardized generic solutions and the specific contexts, practices and requirements of particular organizations like HEIs. Their argument has been the need for better mechanisms for understanding the coupling between technical and institutional change (Pollock *et al.*, 2003: 328). Shoham and Perry (2009) proposed a model for managing organization-wide technological changes in universities on the basis of the

existing mechanism, using knowledge management strategies for the purpose of change management. Other researchers suggested that in ERP implementation especially in HEI the business processes need to be correlated to human actors by explicitly taking into account concepts like the role, competence and knowledge of human resources involved in the project and by better identifying the requirements and possibilities of the workforce, with the final goal of increasing the efficiency and acceptability of the system to be implemented (Hermosillo Worley *et al.*, 2005: 620).

Several researchers have presented the development of a new module for the management and administration of students assuming the existence of a certain kind of user, one with particular roles and responsibilities - a self-service user (Pollock, 2003). Other researchers provided analysis of the rollout of an ERP system in a HEI, their particular focus being on how the development, implementation and use of both generic and university specific functionality is mediated and shaped by a fundamental and long standing tension within universities: this is the extent to which higher education institutions are organizations much like any other and the extent to which they are „unique” (Pollock & Cornford, 2004: 31).

In the current Romanian academic literature are few studies concerning the degree in which the existing ERP systems can be adapted to a Romanian university and if these systems represent a viable proposition for the Romanian higher education sector, because we must consider the fundamental issue concerning the cost feasibility of system integration, training and user licenses that may, in the end, impede ERP system utilization.

2. ERP SYSTEM FOR A ROMANIAN HEI

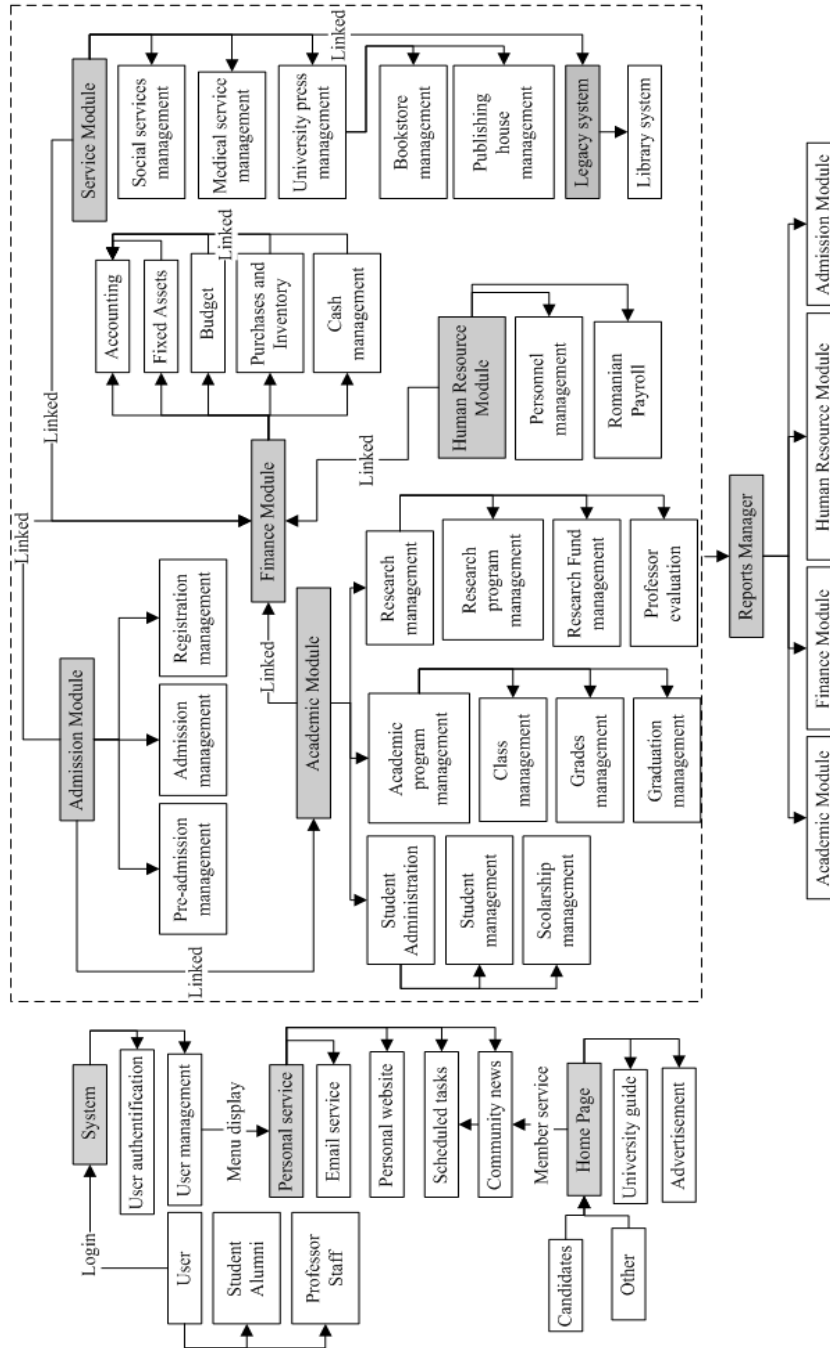
Similar to general corporate information system, university ERP should be closely linked to the business goal and business rule in university for its successful operations. Considering the internal hierarchy presented in Figure 1 we present the case of actual implementation of an ERP system in a Romanian HEI in Figure 2. The main modules of the ERP system should be:

- Admission module for: pre-admission management, admission management and registration management.
- Academic module for: student administration, academic program management and research management.
- Administration modules like: Finance module, Human Resource module, Service module.

The university that is subject to our study has already implemented a system for the library management, which means that this legacy system needs to be integrated within the newly ERP system.

Detailed functionalities for each module are also showed in Figure 2 along with a comprehensive sketch of the portal mapping on the ERP system.

Figure 2. A possible solution for an efficient ERP system in a Romanian HEI



3. DECISION SUPPORT SYSTEM IN HEIs

Through Decision Support Systems the managers of HEIs can manipulate large sets of data in a short period of time in order to take decisions. In essence, managers at every departmental level can have a customized view that extracts information from transactional sources and summarizes it into meaningful indicators. DSS can gather data from the implemented ERP system, from different functional areas or modules such as: financials, academic, human resources, and admission and service modules.

In Decision Support Systems the multidimensional model that is used to be able to overhear the business requests. All we need is a business vision over data structure so the star schema or the n-cube based models have to design and incorporate business aspects or demands not only the facts or the relationship between data. The managers request a synthetic view over facts and indicators and these key performance indicators are built from the entire organizational data or even external data.

Another request is to provide a friendly graphical interface with advanced capabilities of slicing and dicing through data and easily get a new perspective over data by rotating dimensions and drill down or roll up over hierarchical levels. So we need a multidimensional model in which these operations can be made easily, in real time and that can it overhead the entire business model with relationship between dimensions, facts and hierarchies and it is based on the entire organizational data at operational level, tactical level and strategically level.

Based on these considerations we propose an extension of the star or the constellation schema but with aggregate data and hierarchies in fact tables not only in dimension tables. The model is structured over three distinct levels and we can call it a pyramidal model with the following structure (Lungu & Bâra, 2007b):

- Organizational level (or the base of the pyramid) – containing dimensions and facts with an organizational scope, at a general level, that shape and are common to the entire activities. Such dimensions can be: <time>, <faculty>, <education> (EDULEV), <item> and facts: HR (human resources), purchasing, administration (ADDM) etc. Data are at a detailed level with multiple hierarchies over each dimension table.
- Departmental level - containing dimensions and facts for the departmental levels of the organization and particular activities in these departments or field of interests, group by data marts or data centers. Such dimensions can be: <account> (ACC), <student>, <employee> and facts: payments, salaries, cash management (CASH MGM), incomes and costs (VEN COST) etc. Data are at a detailed and aggregate level with specialized hierarchies over each dimension table.

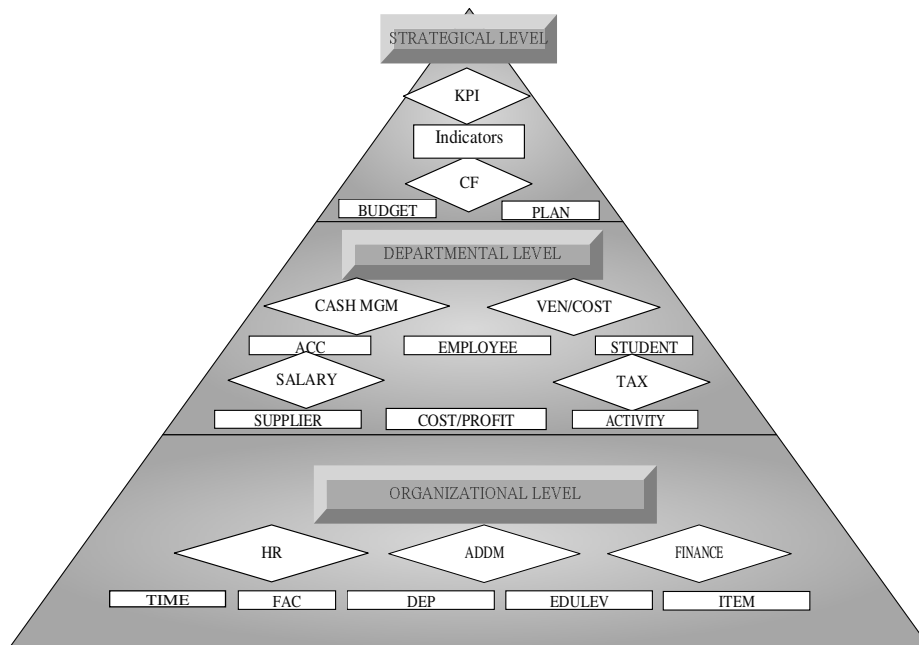
- Strategical level - containing dimensions and facts derived from the base dimensions and facts, with specific elements for the strategic analysis, like <plan>, <budget> and facts: cash-flow (CF), key performance indicators (KPI). Data are at an aggregate, synthetic level with specialized hierarchies over each dimension table.

The main characteristic of the model is that between the dimension tables and the facts from different levels of the architecture can be establish a relationship and also the fact tables can have hierarchies and class attributes that can be used for drill down or roll up.

Advantages of the model:

- Flexibility – new elements or objects like new dimensions or facts can easily be included in the model without affecting the existing architecture or re-modeling the system and the loading process for a specific level can be made without refreshing the whole data;

Figure 3. The pyramidal model for Decision Support Systems in HEIs



- Real model of business requirements – the three level architecture is based on the real model of business requirements thus this model can be mapped on the each level of the pyramid;

- Performance in the drill-down or roll-up operations – because the dimensions and facts are separated at each level we can easily navigate through hierarchies from a level to another;
- Incremental development – the model can be build in stages and each stage can be validated and used before the next stage;
- MIS and EIS support – the bottom and top levels can be used for designing and developing a Management Information System (MIS) or a Executive Information System (EIS) because these systems can use the specific dimension and fact tables from these levels.

Disadvantages of the model:

- High complexity – because it is containing three different level the business model need to be careful analyzed and designed in order to identified the proper and suitable dimensions and facts and also the hierarchies at each level. An inadequate choice can have a major effect on the performance of the entire system;
- Moderate performance of the interrogation process – in order to perform a complex query the model need to establish many relationships and joins between the fact and dimension tables and this can reduce the performance of interrogation;
- Top-down and bottom-up development – In order to overhear the entire aspects of the business process we need to build the systems in two directions: first top-bottom to model the strategic requirements and second, bottom-up for validating and setting up the hierarchical flux of data.

Decision Support System's architecture will be structured on three distinct levels:

- Data Management – represented by relational databases, data warehouses and other type of data sources;
- Model Management – level of extract, transformation and processing of data. This level is based on different type of models for statistic interpretation, analyzing and forecasting data;
- Data Visualization Tools - provide a visual drill-down capacity that can be used to examine data graphically and identify complex interrelationships. DSS attempts to present data in a form that is relevant for strategic decisions.

The architecture can be implemented by the following technologies:

Data Warehouses - a data warehouse collects and organizes data from both internal and external sources and makes it available for the purpose of analysis. A data warehouse contains both historical and current data and it is optimized for fast query and analysis. Data are organized in another type of schema which contain

fact tables and dimension tables. A fact table is related with dimension tables and contains measures and formula which enable a much easier way in finding data.

Dimension tables are structured on different hierarchical levels of aggregation (e.g. Time dimension can have day, week, month and year as hierarchical levels). Data presented in fact tables derived from different type of data sources like relational databases and user files. Data warehouses extract, transform and process data for high-level integration and analysis. Although a data warehouse can make it easier and more efficient to use the DSS, it is not required for an DSS to be deployed. Organizations can extract data directly from their host system database for their analysis and reporting purposes, but in a more difficult way.

Online Analytical Processing (OLAP) - an OLAP engine is a query generator that provides users with the ability to explore and analyze summary and detailed information from a multi-dimensional database. Traditional relational database systems handle this situation by using multiple queries. In many cases, the queries become so complex that even the developer finds them difficult to maintain. OLAP overcomes this barrier by enabling users to analyze multi-dimensional data.

OLAP systems have typically been implemented using two technologies: ROLAP (Relational OLAP), where data is stored in a RDBMS and MOLAP (Multidimensional OLAP) where dedicated multidimensional DBMS is used. There are also version of HOLAP (Hybrid OLAP) and DOLAP (Desktop OLAP) systems. Managers can use an OLAP engine or typical operation like „slice and dice” data by various dimensions and then drill down into the source data or roll-up to aggregate levels. OLAP provide tools for forecasting data and „what-if” analysis. OLAP can only mark the trends and patterns within the data that was requested. It will not discover hidden relationships or patterns, which requires more powerful tools like data mining.

Data Mining - Data mining tools are especially appropriate for large and complex datasets. Through statistical or modeling techniques, data mining tools make it possible to discover hidden trends or rules that are implicit in a large database. Data mining tools can be applied to data from data warehouses or relational databases. Data discovered by these tools must be validated and verified and then to become operational data that can be used in decision process.

In many cases the development of a decision support system involves the design and the implementation of a data warehouse. Different factors such as high costs and resources or an improper system design may lead to a failure in over 50% of these cases. One of the main factors of failure is that the data warehouse is built only for specific tasks or requirements and the expansion of the system cannot be achieved or achieved at very high costs.

For the project lifecycle we can apply the framework proposed in the book (Lungu & Bâra, 2007). The system has to gather data from an ERP system with modules as we shown in figure 3. So the need for a data warehouse is obvious and we have to choose between the two data warehouses solutions: stored data vs. virtual extraction. Because of time and costs and in order to test as soon as we can the DSS functionality we will first choose the second solution: virtual data warehouse. There will be many more changes in the structure of the organization and the impact of these changes may affect the DSS system. So, we can search another solution, and, based on our previous researches on Object Oriented modeling, we can choose this type of modeling.

The particularities and the characteristics of MD cannot be easily accomplished with the basic elements of OO modeling. Some extensions of these basic elements have to be made. Lungu and Bâra (2007) defined a set of object-oriented extensions that can be used for modeling the components and requirements of a data warehouse. We proposed an extension by means of stereotypes to the Unified Modeling Language (UML) for MD modeling and thus OO approach can help us to improve the designing phase and the development cycle and also we can re-use some parts of the prototype that will be implemented in a HEI in order to design and implement the system in the organizational environments.

CONCLUSIONS

Due to newly emerged technologies the competitive climate of public sector Higher Education Institutions (HEIs) is completely changed. What complicates even more the currently existing situation of the Romanian HEIs is the lack of governmental funds. In response to these significant pressures, the Romanian universities need to improve operational efficiency by implementing advanced information systems. These systems were seen as the solution to address the growing governmental information requirements and improve competitiveness. In this paper we provided a possible solution for an information system that could integrate all of a Romanian HEI's department functionalities and provide a better organizational efficiency and effectiveness. Yet, developing scalable and flexible ERP systems in HEIs involve important resources like: time, high-costs and human resources, efforts and it require a flexible modeling for the special business needs. One of these risks is the system design that stem from poor conceptualization of an enterprise's true business needs before the systems is deployed and for every change in these requirements the prototype must be also revised. The framework can be developed using the phases proposed in Lungu & Bâra (2007) and also a possible solution is the object oriented modeling in order to re-use the components and capture in the same place the proprieties and operations.

REFERENCES

- Allen, D., Kern, T. & Havenhand, M. (2002) „ERP Critical Success Factors: An Exploration of the Contextual Factors in Public Sector Institutions”, *Proceedings of the 35th Annual Hawaii International Conference on System Sciences (HICCS'02)*, vol. 8: 227-237
- Baray, S., Hameed, S. & Badii, A. (2008) „Analyzing the factors responsible for effectiveness of implementation and integration of enterprise resource planning systems in the printing industry”, *Journal of Enterprise Information Management*, vol. 21, no. 2: 139-149
- Bologa, R., Muntean, M., Sabău, G. & Scorța, I. (2009) „Critical Implementation Factors in Higher Education ERPs”, *Proceedings of The 8th WSEAS International Conference on Artificial Intelligence, Knowledge Engineering and Data bases (AIKED'09)*, Cambridge, UK: 441-447
- Chang, S. (2004) „ERP Life Cycle Implementation, Management and Support: Implications for Practice and Research”, *Proceedings of the 37th Hawaii International Conference on System Sciences (HICSS'04)*, vol. 8, 80227c, track 8
- Diaconiță, V., Lungu, I. & Bâra, A. (2009) „Technical Solutions for Integrated Trading on Spot, Futures and Bonds Stock Markets”, *Journal WSEAS transactions on information science and applications*, vol. 6, no. 5: 798-808
<http://www.worldses.org/journals/information/information-2009.htm>
- Fotache, D. & Hurbean, L. (2004) „Soluții informatice integrate pentru gestiunea afacerilor ERP”, Bucharest: Economic Publishing House
- Fui-Hoon, F. & Lee-Shang Lau, J. (2001) „Critical factors for successful implementation of enterprise systems” *Business Process Management Journal*, vol. 7, no.3: 285-296
- Gibson, N., Holland, C. & Light, B. (1999), „Enterprise Resource Planning: A Business Approach to Systems Development”, *Proceedings of The 32nd Hawaii International Conference on Science Systems (HICSS)*, track 7
- Hermosillo Worley, J., Chatha, K.A., Weston, R.H., Aguirre, O. & Grabot, B. (2005) „Implementation and optimization of ERP systems: A better integration of processes, roles, knowledge and user competencies”, *Computers in Industry*, vol. 56, no. 6: 620–638
- Kaiser F., Vossensteyn, H., Beerkens, E., Boezerooij, P., Huisman, J., Lub, A., et al. (2004) „Higher education policy issues and trends. An update on higher education policy issues in 11 western countries: 2004”, Retrieved August 18, 2009, from <http://doc.utwente.nl/48217/1/engreport04hepolicyissuesandtrends.pdf>
- Kwon, H. (2008) „Security Engineering in IT Governance for University Information System”, *Proceedings of The International Conference on Information Security and Assurance ISA'08*: 501-504
- Lungu, I. & Bâra, A. (2007) *Executive Information Systems*, Bucharest: Academy of Economic Studies Publisher

- Lungu, I. & Bâra, A. (2007a) *Information systems integration*, Bucharest: Academy of Economic Studies Publisher
- Lungu, I. & Bâra, A. (2007b) „Executive information system’s multidimensional models”, *The proceedings of the international conference on informatics in economy*, Bucharest: ASE Printing House
- Markus, L. & Tanis, C. (2000) „The Enterprise systems experience-from adoption to Success”, in R. W. Zmud (Ed.) *Framing the domains of IT research: Glimpsing the Future Through the Past*, Cincinnati: Pinnaflex Educational Resources: 173-207
- Parr, A. & Shanks, G. (2000) „A Taxonomy of ERP Implementation Approaches”, *Proceedings of The 33rd Hawaii International Conference on System Sciences (HICSS)*, vol. 7: 7018-7028
- Pollock, N. & Cornford, J. (2004) „ERP systems and the university as a „unique” organization”, *Information Technology & People*, vol. 17, no. 1: 31-52
- Pollock, N. (2003) „The ‘Self-service’ Student: Building Enterprise-wide Systems into Universities”, *Prometheus*, vol. 21, no. 1: 101-119
- Pollock, N., Williams, R., Procter, R. (2003) „Fitting Standard Software Packages to Non-standard Organizations: The ‘Biography’ of an Enterprise-wide System”, *Technology Analysis & Strategic Management*, vol. 15, no. 3: 317-332
- Rasmy, M.H., Tharwat, A. & Ashraf, S. (2005) “Enterprise Resource Planning (ERP) Implementation in the Egyptian Organizational Context”, *Proceedings of the EMCIS International Conference*, track 19
- Rusu, L., Mureşan, L., Arba, R., Bresfelean, P., Rusu, A. & Stănculea, L. (2005) „Sisteme integrate și sisteme ERP”, Cluj-Napoca: Risoprint Publishing House
- Scorța, I. (2006) „Critical success factors in Romanian SME’s ERP implementation”, *Proceedings of the 3rd International Workshop IE&SI, Timișoara, Romania*: 308-315
- Scott, G. (2003) ”Effective change management in higher education”, *Educause Review*, no.38: 64–80
- Scott, S.V. & Wagner, E.L. (2003) „Networks, negotiations, and new times: the implementation of enterprise resource planning into an academic administration”, *Information and Organization*, no. 13: 285-313
- Shanks, G., Parr, A., Hu, B., Corbitt, B., Thanasankit, T. & Seddon, P. (2000) „Differences in critical success factors in ERP systems implementation in Australia and China: A cultural analysis”, *Proceedings of the 8th European Conference on Information Systems (ECIS)*, track 53: 537-544
- Shoham, S. & Perry, C. (2009) „Knowledge management as a mechanism for technological and organizational change management in Israeli universities”, *High Education*, no. 57: 227-246
- Wagner, E. & Newell, S. (2004) „Best’ for whom?: the tension between ‘best practice’ ERP packages and diverse epistemic cultures in a university context”, *Journal of Strategic Information Systems*, no. 13: 305-328